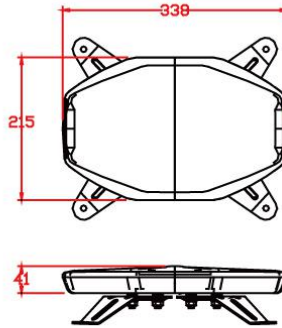
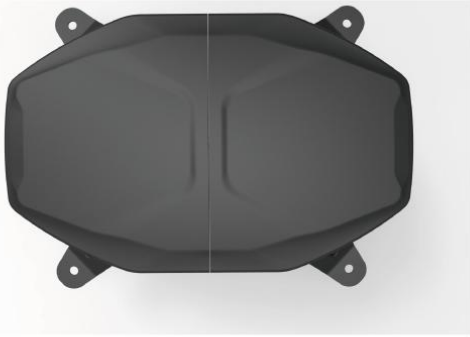


KS18-030-2 LED Warning Light Bar

Product Features:

1. Elegant looking
2. 360 degree flash viewing angle
3. Aluminum housing with long lifespan and all weather resistance
4. IP65



Item No.: KS18-030-2

Item Name: LED warning light bar with 2 combination

Voltage: 10-30V

Wattage: 25W

Install: Bracket or magnetic

Approval: ECE R10, R65, CE, Rohs, IP65

LEDs: 8pcs of 3535 LEDs and 32pcs of 2835 LEDs

Flash Pattern: 10 styles

Product size: 338x215x41mm

Working temperature: -30 to 80 centi degree



Package information:

Each piece packed in an inner box: 350mm * 225mm * 100mm

10pcs packed in an outer carton: 370mm * 520mm * 520mm

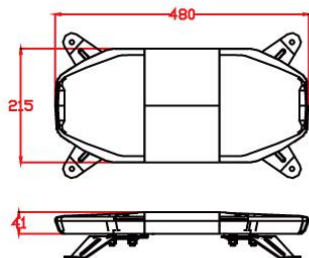


KS18-030-3 LED Warning Light Bar



Product Features:

1. Elegent looking
2. 360 degree flash veiwing angle
3. Aluminum housing with long lifespan and all weather resistance
4. IP65



Item No.: KS18-030-3

Item Name: LED warning light bar with 2 combination

Voltage: 10-30V

Wattage: 35W

Install: Bracket or magnetic

Approval: ECE R10, R65, CE, Rohs, IP65

LEDs: 8pcs of 3535 LEDs and 48pcs of 2835 LEDs

Flash Pattern: 10 styles

Product size: 480x215x41mm

Working temperature: -30 to 80 centi degree

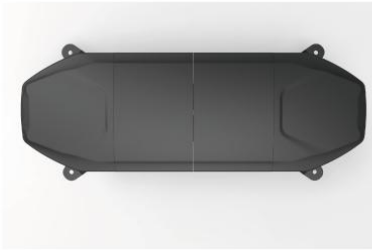
Package information:

Each piece packed in an inner box: 490mm * 225mm * 100mm

10pcs packed in an outer carton: 510mm * 520mm * 520mm

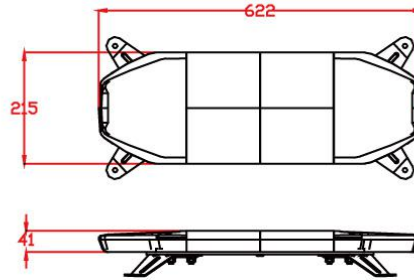
ECE
Approved

KS18-030-4 LED Warning Light Bar



Product Features:

1. Elegant looking
2. 360 degree flash veiving angle
3. Aluminum housing with long lifespan and all weather resistance
4. IP65



Item No.: KS18-030-4
Item Name: LED warning light bar with 4 combination
Voltage: 10-30V
Wattage: 45W
Install: Bracket or magnetic
Approval: ECE R10, R65, CE, Rohs, IP65
LEDs: 8pcs of 3535 LEDs and 64pcs of 2835 LEDs
Flash Pattern: 10 styles
Product size: 622x215x41mm
Working temperature: -30 to 80 centi degree

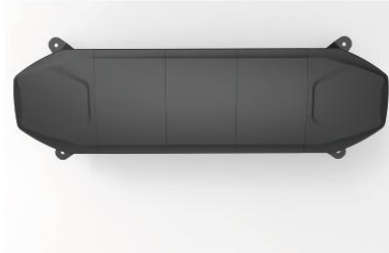


Package information:

Each piece packed in an inner box: 630mm * 225mm * 100mm
10pcs packed in an outer carton: 650mm * 520mm * 520mm

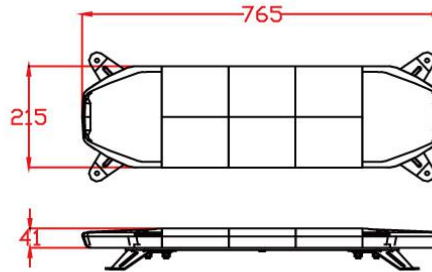


KS18-030-5LED Warning Light Bar



Product Features:

1. Elegant looking
2. 360 degree flash veiwing angle
3. Aluminum housing with long lifespan and all weather resistance
4. IP65



Item No.: KS18-030-5
Item Name: LED warning light bar with 5 combination
Voltage: 10-30V
Wattage: 50W
Install: Bracket or magnetic
Approval: ECE R10, R65, CE, RoHS, IP65
LEDs: 8pcs of 3535 LEDs and 80pcs of 2835 LEDs
Flash Pattern: 10 styles
Product size: 765x215x41mm
Working temperature: -30 to 80 centi degree



Package information:

Each piece packed in an inner box: 775mm * 225mm * 100mm
10pcs packed in an outer carton: 795mm * 520mm * 520mm